

It's A Doozie®



Doozie® Boat House Lifts

Owner's Manual & Installation Instructions

Installed by:

Date:

The Boat Lift Store, INC.

1557 NC Hwy 903

Littleton, NC 27850

1-252-586-5437

1-800-586-9952

Limited Warranty

The Boat Lift Store, Inc. hereby warrants to the original retail purchaser of each of its products that such products are free from defective materials and workmanship for a period of one (1) year from the date of purchase, when purchased from The Boat Lift Store or a dealer authorized by The Boat Lift Store to sell such products. The limited warranty is valid only when such products are used under normal conditions of recommended use. During this period, The Boat Lift Store will repair or replace, at the option of The Boat Lift Store, any product or component part manufactured by The Boat Lift Store without charge for parts or repairs on any such product or component. All products, component parts, equipment or accessories not manufactured by The Boat Lift Store are not covered by the provisions of this warranty, but may be covered by the warranties of the manufacturers supplying such products, component parts, equipment and accessories.

Warranty Exclusions

This Warranty does not include:

1. Any product or component part which has been subjected to abuse, neglect, accident or unauthorized and improper usage.
2. Any product or component part which has been altered or repaired by anyone not authorized by The Boat Lift Store to make such alterations or repairs during the term of this warranty.
3. Any product or component part which has been subjected to stress or lift dead weight in excess of its rated capacity.
4. Any defect, damage or injury resulting from the consumer or any other person in or on any boat, platform or other such item which is attached to any product or component part thereof.
5. Any defects, damage or injury attributable to transportation of any product or component part thereof.
6. Defects in materials or workmanship which could have been discovered by a reasonable examination of the product or component part under normal use and service.
7. Any incidental or consequential damages or injuries.

Other than as set forth above. The Boat Lift Store makes no other express or implied warranties with respect to any product or component part manufactured or sold by The Boat Lift Store. No person or dealer is authorized to make any representations, promise or warranties on behalf of The Boat Lift Store. Any implied warranties or merchantability or fitness for a particular purpose are limited to one (1) year from the date of sale to the original purchaser.

This warranty gives you specific legal rights, and you may also have other rights which may vary from state to state. Some states do not allow limitations on how long an implied warranty lasts, so the above limitation may not apply to you. Some states do not allow the exclusion or limitation of incidental or consequential damages, so the above limitation or exclusion may not apply to you.

In order to obtain service or make a warranty claim, the consumer should provide the following information to The Boat Lift Store at 1557 Hwy 903, Littleton, NC 27850.

1. State your name, address, and telephone number.
2. State the date your product was installed.
3. State the date you purchased your product and from whom it was purchased.
Please provide a proof of purchase.
4. State in clear and concise terms the actual defect that is the basis for your warranty claim.

3000 BH-D/ 4000 BH-D

(Piling mount)- When hanging lift on the pilings, piling placement is very important (see piling mount drawing), so that the weight of the boat is evenly distributed on the cradle. Some type of compression bar needs to be installed between the piling to prevent them from being pulled together. (Overhead mount)- Hanging the lift in the roof of your boat house works very well. It gives more clearance above the water and eliminates that need for exact piling placement. The roof structure needs to be of sufficient strength for the added weight of the lift and your boat. If the span is no more than 10 ½ -11 ft, 3 2x6's nailed together makes a good overhead beam (see overhead beam drawing)

1. Hold the pipe and pulley hangers up on the piling to drill or mark for the hole. Drill top hole in the pipe hangers, you can drill both holes in the pulley hangers keeping them straight on the piling. Once you have top hole drilled in pipe hangers slide the pipe in the hangers. Now you can drill bottom holes in pipe hangers, hang gear plate on the end of the pipe in the kit. Tighten up all the bolts. With that done, you can drill holes in pipes for you cables. In the center of the pipe hangers, take a center punch and mark it to drill a hole all the way through the pipe. Now run cables through the hole down to the cradle and over the pulley and down to the cradles. Hook the cable to the cradles, Do Not tighten clamps fully until the cradles are leveled (stainless steel nuts have a tendency to seize).
2. When leveling the cradle try to match the angle of the boat from front to back. It's usually 2"-4" higher in the front than in the back.
3. Put carpet on the boards using roofing nails or staples (roofing nails work best). Install 2"x8"x12' boards to cradles (boards usually overhang rear cradle by 18")
4. Install motor, switch, wire, GFI, and grease all fittings
5. Install cover-Instructions are in the cover hard ware bag.

Pay attention when operating the lift. Always watch when lowering the boat. Stop the lift when the boat is floating, setting the cradles on the bottom can cause the cables to unwind and tangle.

3000/4000 deluxe parts list

- | | |
|------------------------------|--------------------------|
| -Pipe hangers & ½" bolts | -Cradle beams |
| -Pulley hangers & ½" bolts | -12'Pipe |
| - Cradle brackets & hardware | -Gear Assembly |
| -Carpet | -Cable, clamps, thimbles |
| -Drive cover | |

4000/6000 BHO SM & CM

1. Install pulleys. Do not over tighten. Bolt pipe hangers, finger tight only.
2. Lay upper beams across the slip, place beams so that the boat weight is balanced front and back, space the beams 8ft min -9ft max apart front to back.
3. Slide pipe through hangers, adjust beams across the slip so that the cradle is centered across the boat
4. Make sure the pipe turns freely by hand, tighten bolts in pipe hangers
5. Secure the beams to headers using corner angles supplied in kit, hang gear drive on plate
6. Bolt gear to bottom chord of roof truss-if no truss use a 2x6 across slip parallel to lift beams
7. Use ½"x3" bolts to secure gear plate-push the bolts through from the truss or 2x6 side, leaving the treads and nuts on gear side, this makes cover installation easier-make sure the gear plate is square with the pipe. Mount motor, belt, and pulley.
8. Drill a 3/8" hole all the way through the pipe, run cable through the hole in the pipe across slip over pulleys and down the cradles.
9. Attach cable to cradles (It's easier to assemble cradles using walkboard(s) across the boat slip) DO NOT tighten clamps fully until cradles are leveled-stainless steel nuts have a tendency to seize on the treads
10. When leveling the cradles-try to match the angle of the boat front to back-usually 2"-4" higher in the front
11. Attach carpet to boards, bolt boards to cradles. Usually there is an 18" (plus/minus) over hang at rear cradles
12. Install motor, switch, wire, GFI, and grease all fittings
13. Install cover-Instructions are in the cover hard ware bag

Pay attention when operating the lift. Always watch when lowering the boat. Stop the lift when the boat is floating, setting the cradles on the bottom can cause the cables to unwind and tangle.

4000/6000 Center Mount parts list

- Pipe hangers (2)
- Pulleys w/ shaft bolts
- Cradle brackets
- Corner angles (4)
- Carpet
- Drive Cover
- Grease gutters
- Cradle beams
- 12' Upper beams
- 12' pipe
- Gear assembly
- Motor, switch,&wire
- Cable, clamps, thimbles

4000/6000 Side Mount parts list

- Pipe hangers (2)
- Pulley hangers(2)
- Cradle brackets
- Corner angles(4)
- Carpet
- Drive Cover
- Grease gutters
- Cradle beams
- 12' Upper beams
- 12' pipe
- Gear assembly
- Motor, switch, wire
- Cable, clamps, thimbles

Wiring:

Your Doozie Boat Lift comes prewired with an electric motor and reversing switch. All you need is proper 110 AC current. The motor may be changed to run 220 volts. Instructions for 220 volts are on the side of the motor and on this page.

Bremes Switch to A.O. Smith Motor

Power Wire	Bremes Switch	A.O. Smith Motor
Black	L1	
White	L2	
Green		Ground Post
	T1	L1
	T2	L2
	T8	Red
	T9	Black

T8 and T9 can be interchanged to reverse the direction (up, down)

For 220 volts – inside motor, move blue wire to post 5 and white wire to post 3. All other connections remain the same. Do not change the switch. The Ground Fault Device supplied with your lift is 110 volts only. For 220 volts, a 220v Ground Fault Device should be installed with the service. Remove the 110V Ground Fault Device.

Recommended Wire Size for Installation of your GEM Controller-1 Phase,75C Copper Wire

# of Motors	Motor HP	120 Volt AC Main Feed							240 Volt AC Main Feed						
		Amps to run	Breaker Size	50 Feet	100 Feet	200 Feet	300 Feet	400 Feet	Amps to run	Breaker Size	50 Feet	100 Feet	200 Feet	300 Feet	400 Feet
1	1/2	8.8	10 Amps	12	10	6	4	4	4.4	5 Amps	14	14	12	10	10
1	3/4	10.8	15	12	8	6	4	3	5.4	10	14	14	12	12	10
1	1	12.8	15	10	8	6	4	3	6.4	10	14	14	12	12	10
1	1 1/2	17.0	20	10	6	4	2	1	8.5	10	14	14	10	10	8
2	1/2	17.6	20	10	6	4	2	1	8.8	10	12	12	10	8	6
2	3/4	21.6	25	8	6	3	1	----	10.8	15	12	12	10	8	6
2	1	25.6	30	8	4	2	1	----	12.8	15	12	10	8	6	4
2	1 1/2	34.0	35	6	4	1	2/0	----	17.0	20	12	10	8	4	2
4	1/2	----	----	----	----	----	----	----	17.6	20	12	10	6	4	4
4	3/4	----	----	----	----	----	----	----	21.3	25	12	8	6	4	3
4	1	----	----	----	----	----	----	----	26.0	30	10	8	4	3	2
4	1 1/2	----	----	----	----	----	----	----	36	35	10	6	4	2	1
4	2	----	----	----	----	----	----	----	44.8	45	8	6	3	1	1/0

Breaker sizes are our recommendation. Please use motor label for proper size and code compliance.

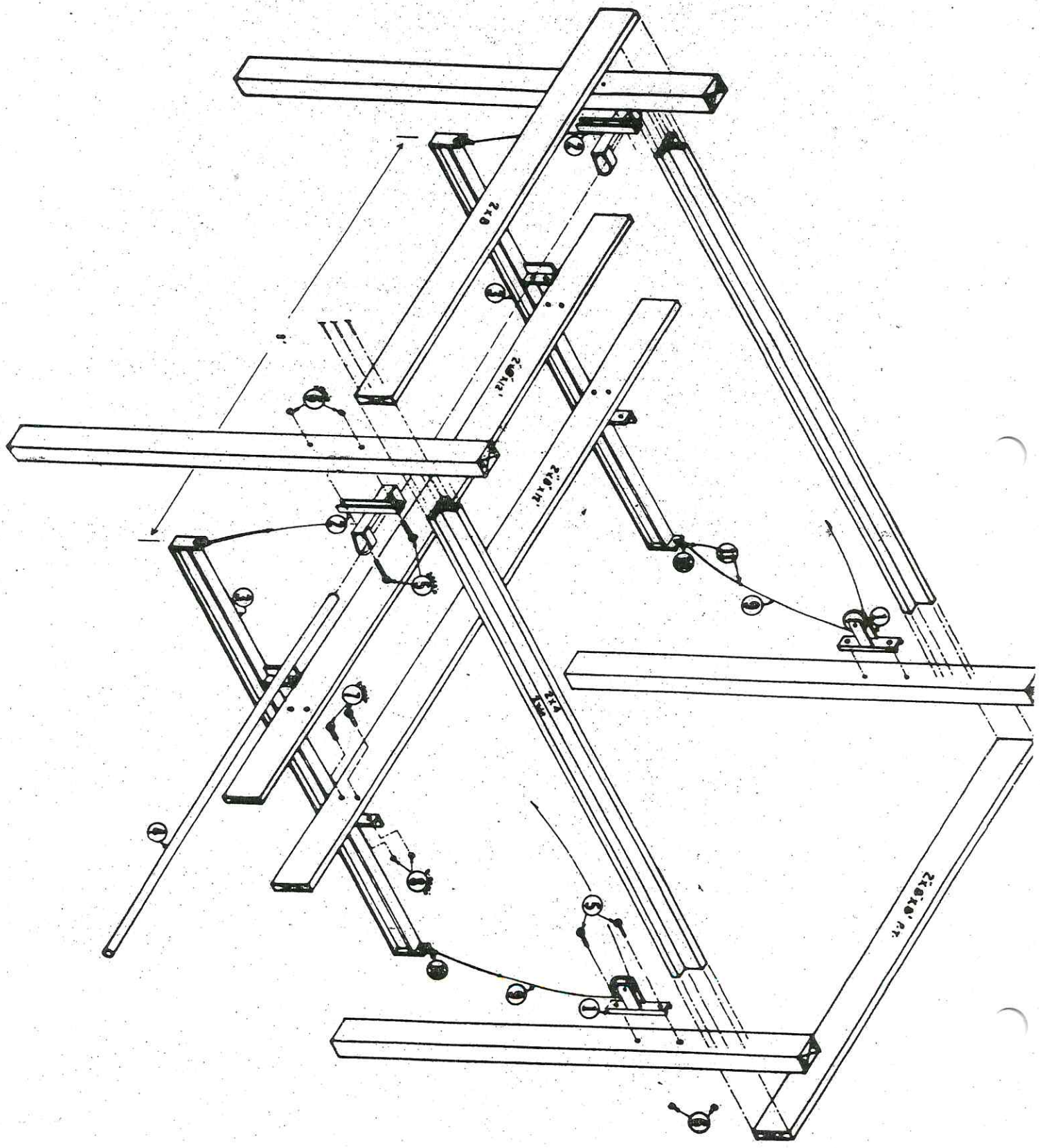
6000/8000 BHO Double Motor Lift Assembly

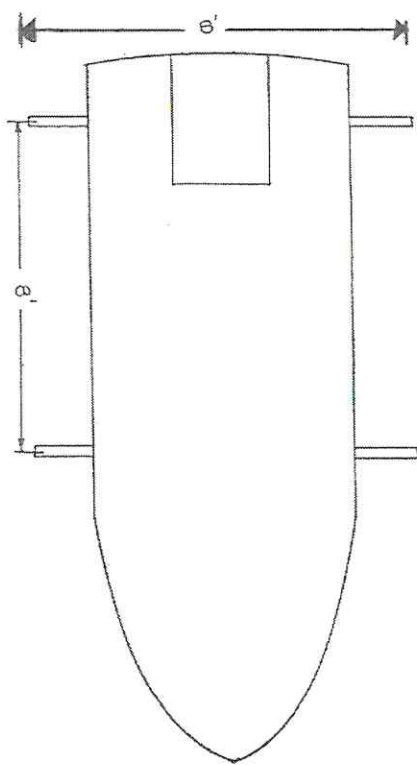
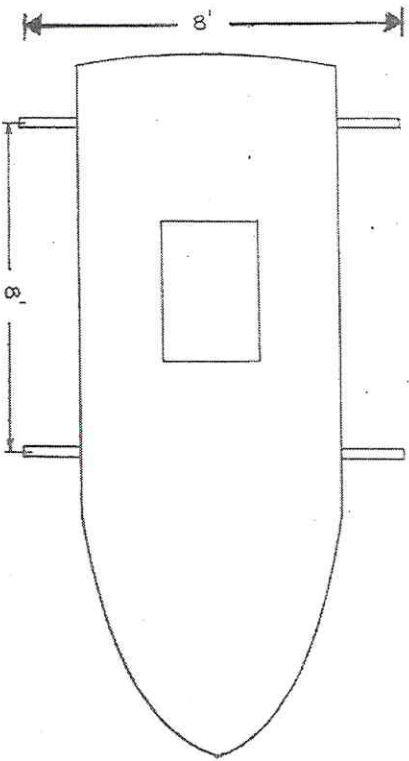
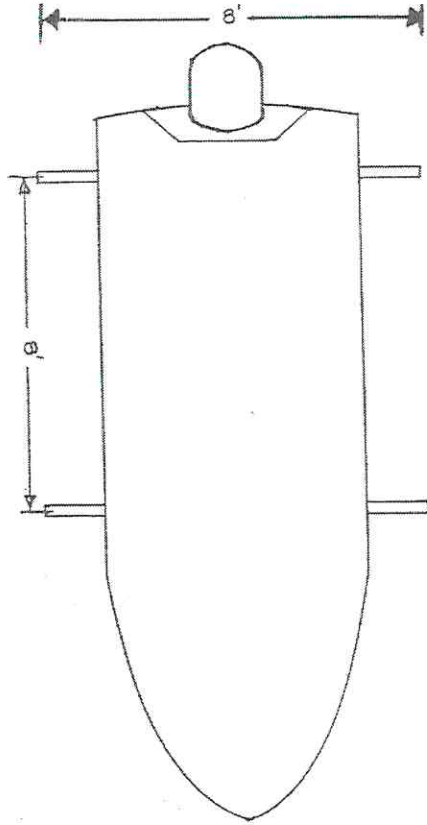
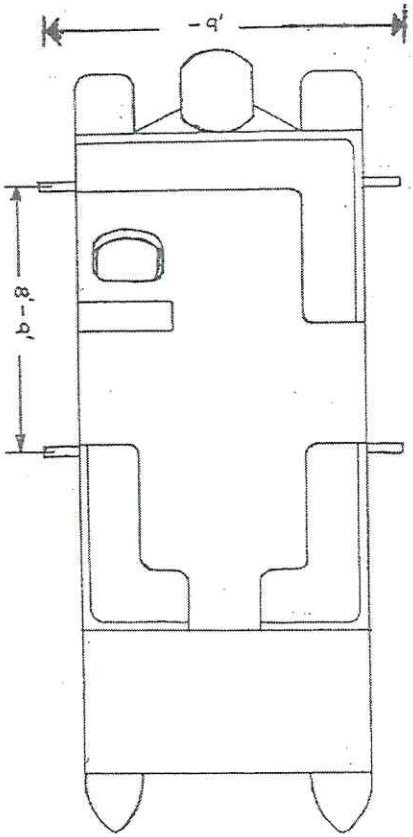
1. Bolt pipe hangers to the overhead beam.
2. Lay upper beam across slip, place the beams so that the boat's weight is balanced from front to back. Usually the beams are set 8 foot minimum to 9 foot maximum apart from front to back.
3. Slide pipes through hangers and adjust the beams across the slip so that the cradles are centered.
4. Make sure the pipes turn by hand, tighten bolts in the pipe hangers.
5. Secure beams to the headers using corner angles supplied in the kit. Hang gear drives on the pipe.
6. Bolt gear to bottom chord of roof truss. (If no truss, use a 2X6 across slip parallel to lift beams.)
7. Use 1/2 " x 3" bolts to secure gear plate, push the bolts through the truss side or 2x6 side, leaving the threads and nuts on the gear side. This makes the cover installation easier. Make sure that the gear plate is square with the pipe.
8. Drill a 3/8" hole through one side of pipe on all four pipe hangers, after you have drilled the holes run cable through and all the way out the end of the pipe. To get the correct angle for cradles from front to back, the front two cables measure 8" from the end and put cable clamps on and tighten. For the back cable measure 4" from the end and put cable clamps on and tighten. Pull cable back inside pipe. This will give you the angle for the cradles.
9. Attach cables to cradles (it's easier to assemble cradles using a walk board across the boat slip) hook cable to cradles with shackles.
10. Now install the cradle brackets, adjusting them for the width of the boat.
11. Put carpet on (if desired) using roofing nails (best) or staples.
12. When operating the lift always watch it when lowering the boat, you should stop the lift when the boat is free floating. Do NOT let the cradles touch the bottom to avoid the cables becoming tangled.

Parts List

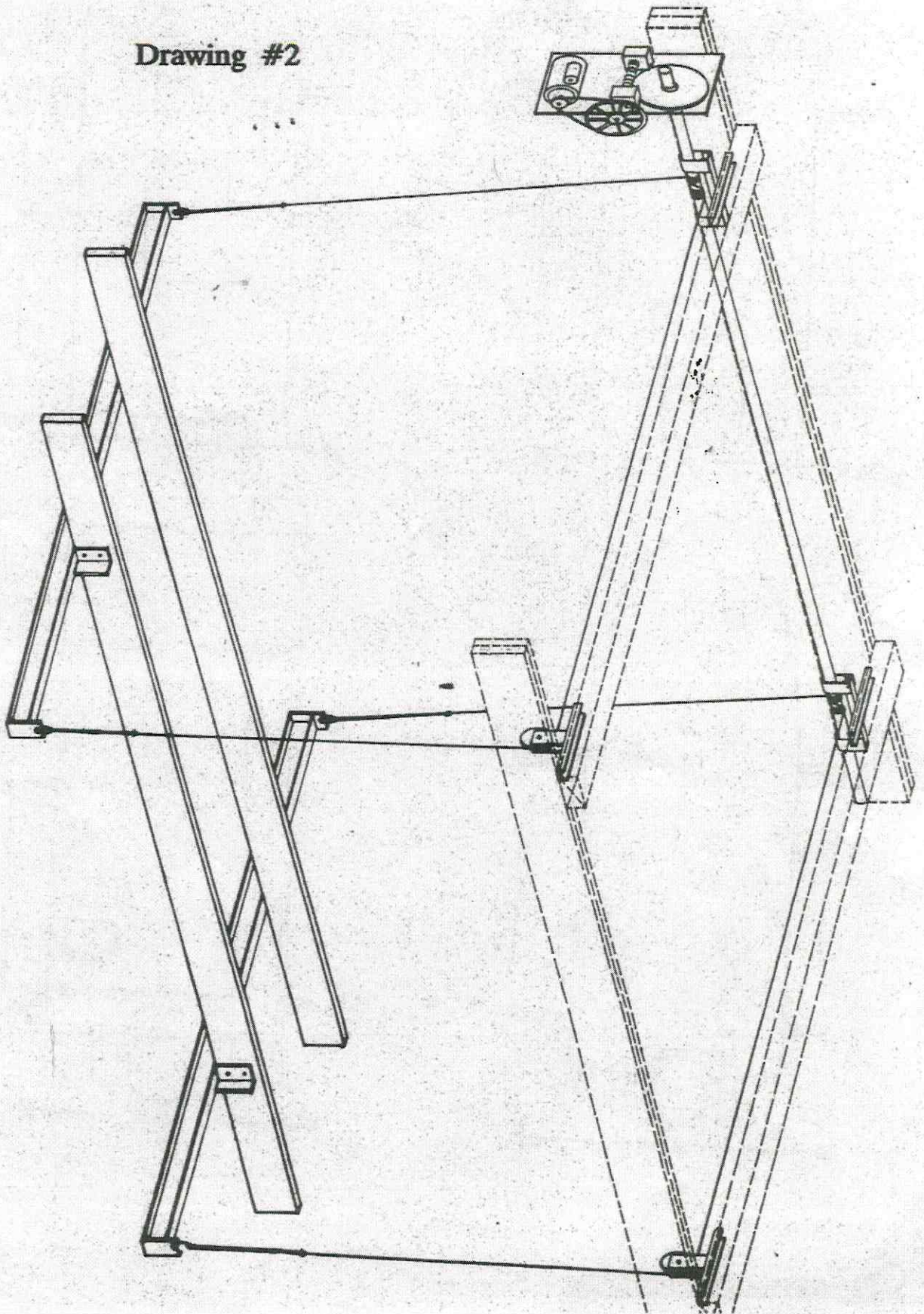
- Pipe hangers (4)
- Corner angles (4)
- Carpet
- Cables
- Cradle brackets and hardware
- Pulley covers (2)
- 12' Overhead Beam (4" or 5")
- 9' Cradles (5" or 6")
- Gears and motors

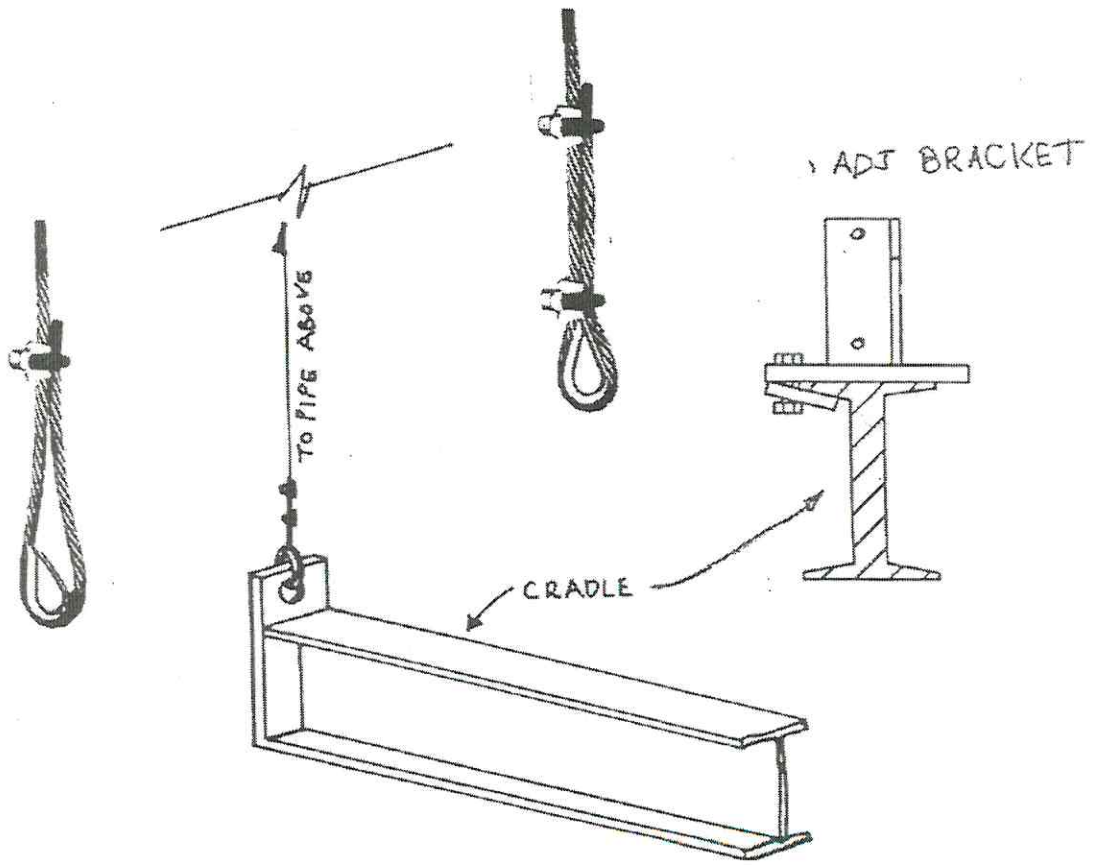
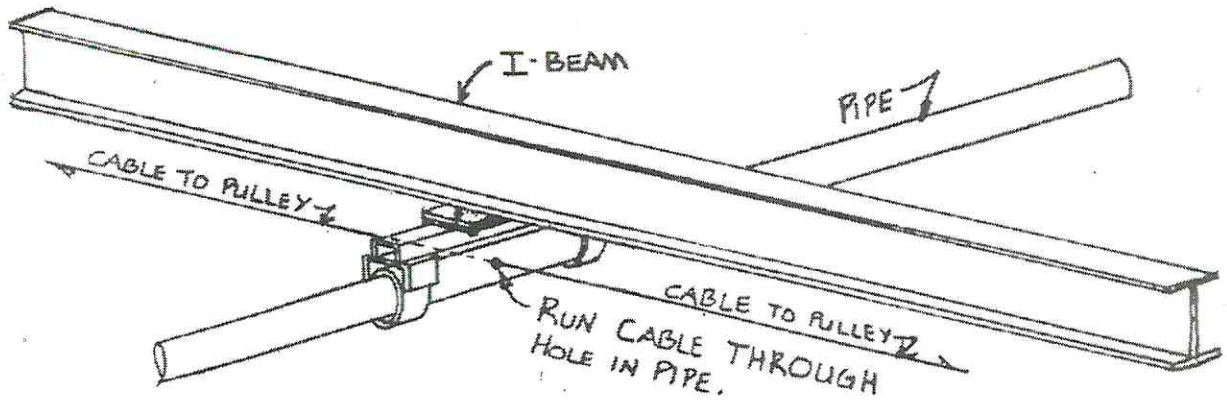
Drawing #1



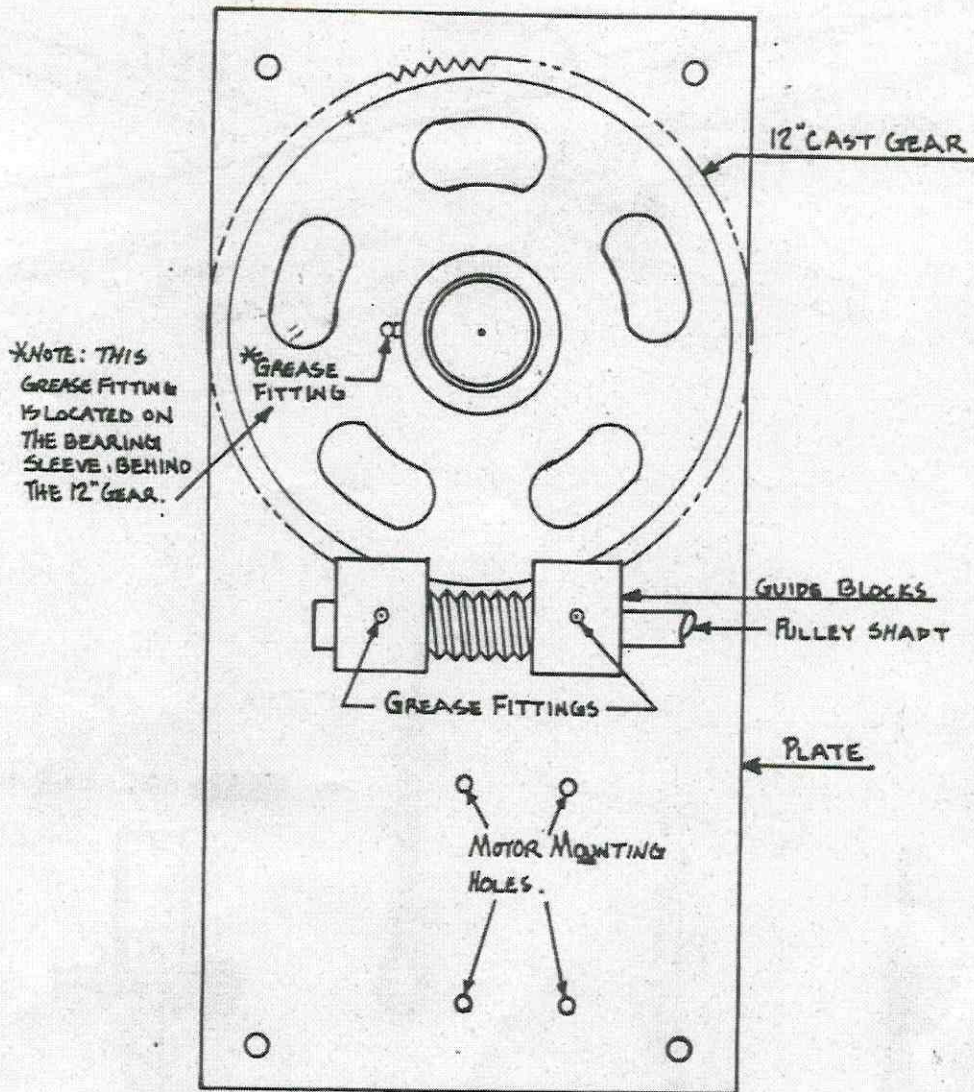


Drawing #2





BOAT LIFT MAINTENANCE



Keep your Doozie® gear drive well lubricated at all times. There are three grease fittings, one on each bushing block, and one on the 12" worm gear. Grease the pipe hangers. A standard grease gun from any auto parts store will work. Check your cable regularly for signs of rust, deterioration or broken strands. We recommend replacing the cable every 5 years, even if it appears to be in good shape. Keep your V belt tight and your electric motor clean and free from insects and nests.

TROUBLE SHOOTING

TROUBLE	CAUSE	WHAT TO DO
LIFT WILL NOT RAISE BOAT	Boat too large for lift	Replace with larger capacity lift
	Motor underpowered	See Motor Trouble Guide
	Lift not lubricated properly	Lubricate gears and pipe supports. Check owners manual for lubrication points.
	Pulley spins in belt	Increase tension on belt
NO POWER TO MOTOR	Defective Drum Switch (Up/Down)	Replace
	Defective Ground Fault Device	Replace* Remove in-line ground fault if connecting to a circuit that already has ground fault protection
FRAYED CABLE	Cable is old	Replace with new cable
TANGLED CABLE	Cable is tangled and rubbing against itself or pipe hangers	Be sure that cable is winding properly
	Setting cradle on bottom and unweighting	Un-weight cradle. Check for frayed cable and replace if necessary. Rewind cable properly. DO NOT set cradle on bottom.
TANGLED FRONT CABLE - REAR CABLE OK <small>(This problem is more noticeable in shorter length boats with big block engines)</small>	Boat not setting on lift properly	Check owners manual for proper lift placement for your boat.
	Cradle too flat - boat hits cradle boards at the rear, causing the front part of cradles to un-weight	Increase angle of cradle
MOTOR FAILS TO START	Low voltage	Inadequate wire size. Low system voltage. DO NOT use extension cords.
	Improper line connections	Check connections against diagram supplied with motor
	Motor may be overloaded	Insure boat weight is within rated capacity of lift
	Defective Motor or starter	Repair or replace
MOTOR STALLS	Overloaded Motor	Boat too heavy for rated capacity of lift
	Low motor voltage	Low system voltage
MOTOR OVERHEATS WHILE RUNNING UNDER LOAD	Overload	Boat too heavy for rated capacity of lift
	Dirt preventing ventilation	Clean motor
	Faulty connection	Clean, tighten and replace
	Defective Motor	Repair or replace

***NOTE:** The ground fault device provided with your DOOZIE Boat Lift is for 115 volts only. When converting to 220 volts, the Ground Fault Device should be removed from the line. A 220V Ground Fault Device should be wired in with the service.

Thank you for choosing a Doozie Boat Lift.
With proper installation, you should enjoy years
of trouble free use. Our goal is to provide you with
a high quality, dependable means to lift your boat.
If you have any questions concerning installation,
or operation, please give us a call.

Sincerely,

The Boat Lift Store
1-252-586-5437
1-800-586-9952

Other Products

Jet Ski Lifts
4 Post Lifts
Pontoon Adapters
Cable Covers
Aluminum Dock Bumpers
Folding Aluminum Ladders
Wireless Remote Controls



It's A
Doozie®

THE BOAT LIFT STORE, INC.
1557 NC HWY 903 - Littleton, NC 27850
1-252-586-5437 - 1-800-5869952
NOT FOR LIFTING HUMAN BEINGS